

124°15'15"E 124°16'45"E 124°18'15"E 124°19'45"E 124°21'15"E 124°22'45"E 124°24'15"E

10°01'30"N
10°00'00"N
9°58'30"N
9°57'00"N
9°55'30"N

N.00.00.01
N.00.00.01
N.00.75.06
N.00.75.06
N.00.55.06

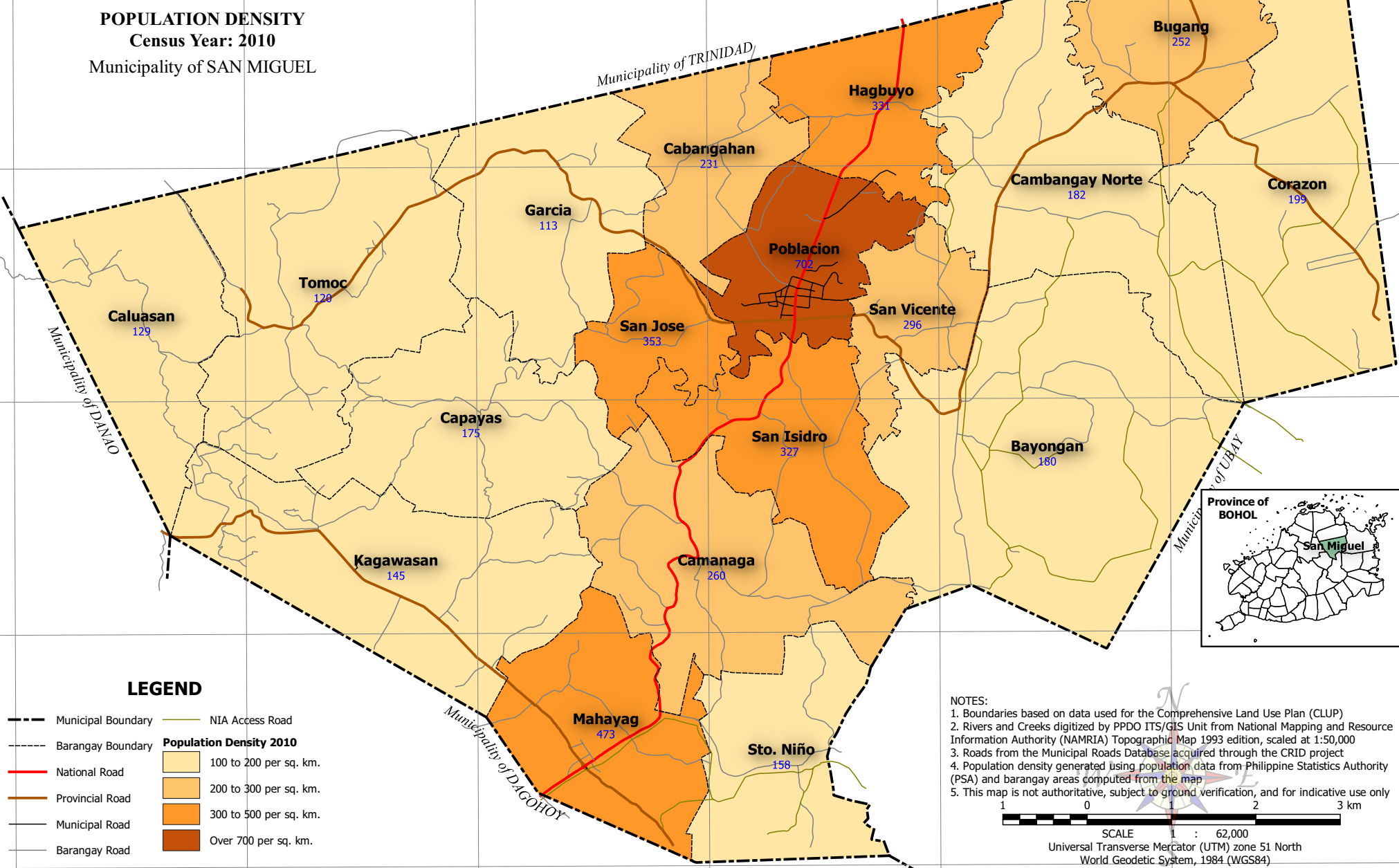


Republic of the Philippines
PROVINCE OF BOHOL
City of Tagbilaran



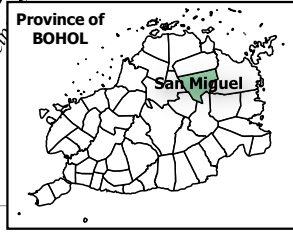
PROVINCIAL PLANNING AND DEVELOPMENT OFFICE

POPULATION DENSITY
Census Year: 2010
Municipality of SAN MIGUEL



LEGEND

- Municipal Boundary
 - Barangay Boundary
 - National Road
 - Provincial Road
 - Municipal Road
 - Barangay Road
 - NIA Access Road
- Population Density 2010**
- 100 to 200 per sq. km.
 - 200 to 300 per sq. km.
 - 300 to 500 per sq. km.
 - Over 700 per sq. km.



NOTES:

1. Boundaries based on data used for the Comprehensive Land Use Plan (CLUP)
2. Rivers and Creeks digitized by PPDO ITS/GIS Unit from National Mapping and Resource Information Authority (NAMRIA) Topographic Map 1993 edition, scaled at 1:50,000
3. Roads from the Municipal Roads Database acquired through the CRID project
4. Population density generated using population data from Philippine Statistics Authority (PSA) and barangay areas computed from the map
5. This map is not authoritative, subject to ground verification, and for indicative use only

1 0 1 2 3 km

SCALE : 62,000
Universal Transverse Mercator (UTM) zone 51 North
World Geodetic System, 1984 (WGS84)

124°15'15"E 124°16'45"E 124°18'15"E 124°19'45"E 124°21'15"E 124°22'45"E 124°24'15"E